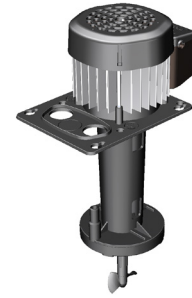


ST series offers a **long-life reliable solution** for your needs. It provides a wide range of versions designed for **small and big refrigeration systems** ensuring **great performances**.



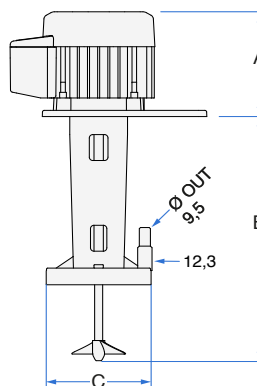
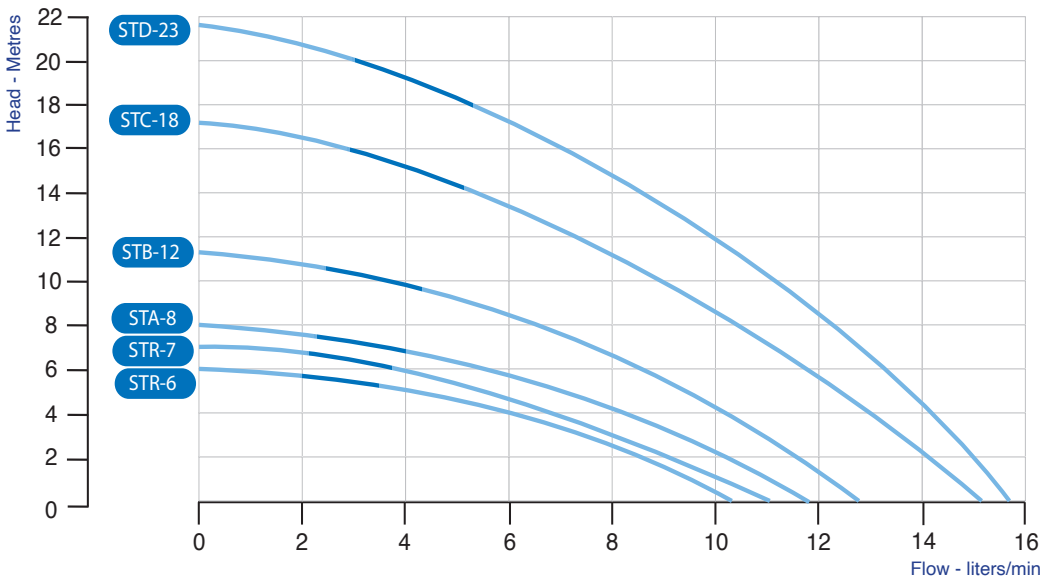
ST



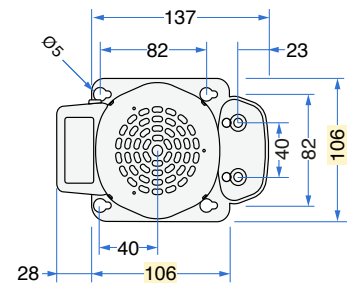
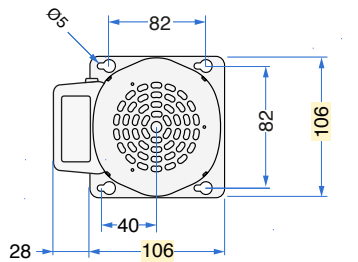
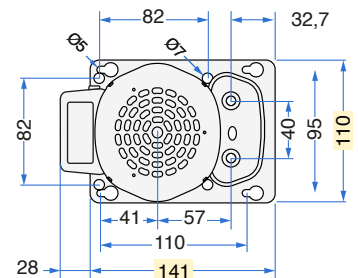
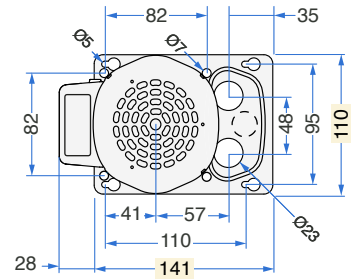
TECHNICAL SPECIFICATIONS



Category	AGITATOR-PUMP with immersed vertical axis.
Windings	Single-phase motor. Insulation Class F.
Motor body	Extruded aluminium casing.
Protection	IP 44 ingress protection rating.
Safety	Built-in thermal motor protection system.
Ball bearings	Ø 8 mm NSK, SKF or equivalent, in semi-rigid noise-damping silicone casing.
Motor shaft	AISI 303 INOX steel Ø 8 mm.
Fastening parts	INOX steel or corrosion-resistant materials.
Motor parts	Thermoplastic motor parts resistant to high temperature.
Cooling system	Air cooled pump with a suction speed of 2,2 m/s.
Water connection	Compatible with John Guest fittings.
Operation	Power supply 220-240 Volts - 24 hours a day non stop. Clean non drinkable water only.
Regulations	Complying with EN60335-2-41:2003/A2:2010 and WEEE/RoHs directives.
Note	Italian PATENTED component installed inside. Read the instruction booklet for correct set up and use.



AVAILABLE FIXING PLATES



TYPE	Volt	Hz	Amp	Watt (IN)	RPM	A	B	C	Ø OUT	Propeller Ø [mm]	Weight [Kg]
STR-6	220-240	50	0,18	46	2800	90	189	78	9,5/12,3	50x15° 2 Blades	1,5
STR-7	220-240	50	0,19	50	2800	90	223	90	9,5/12,3	50x15° 2 Blades	1,5
STA-8	220-240	50	0,25	54	2800	105	223	90	9,5/12,3	50x15° 2 Blades	1,8
STB-12	220-240	50	0,36	80	2800	105	223	90	9,5/12,3	50x15° 2 Blades	1,9
STC-18	220-240	50	0,46	99	2800	120	223	90	9,5/12,3	50x15° 2 Blades	2,5
STD-23	220-240	50	0,51	112	2800	120	242	90	9,5/12,3	50x15° 2 Blades	2,7

Rev. 21-02 Performance and electrical data have been tested at 20°C with clean water only. The company reserves the right to modify specifications without prior notice.