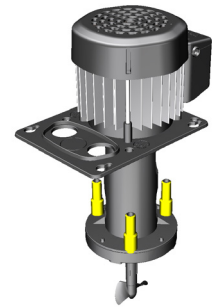


SP series is an agitator pump solution dedicated to **multiple-tower installations** that gives you the possibility to **connect many cooling circuits** using just one pump. Made with **UL compliant materials**, it supports you reaching **worldwide markets**.



SP
MULTI-FLOW

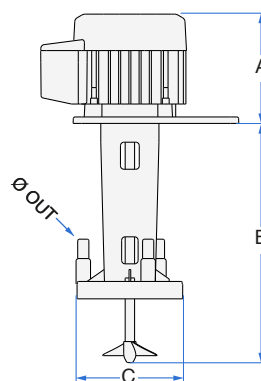
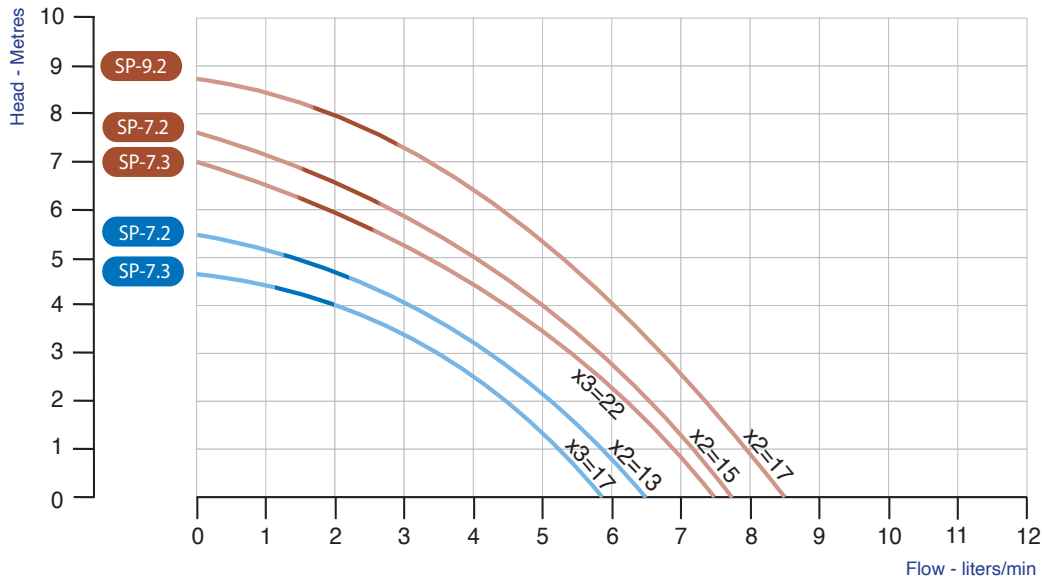
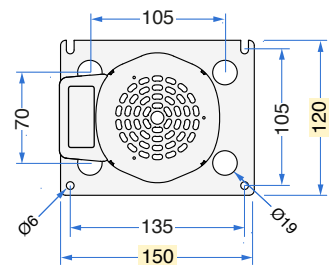
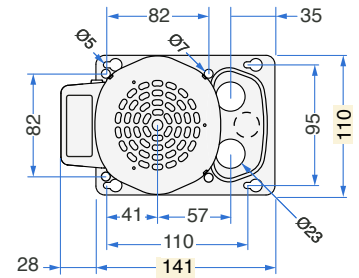


TECHNICAL SPECIFICATIONS



Category	AGITATOR-PUMP with immersed vertical axis.
Windings	Single-phase motor. Insulation Class F.
Motor body	Extruded aluminium casing.
Protection	IP 44 ingress protection rating.
Safety	Built-in thermal motor protection system.
Ball bearings	Ø 8 mm NSK, SKF or equivalent, in semi-rigid noise-damping silicone casing.
Motor shaft	AISI 303 INOX steel Ø 8 mm.
Fastening parts	INOX steel or corrosion-resistant materials.
Motor parts	Thermoplastic motor parts resistant to high temperature complying to UL regulation.
Cooling system	Air cooled pump with a suction speed of 2,2 m/s.
Water connection	TRIPLE connection Ø 9,5 mm John Guest fittings.
Operation	Power supply 110 & 115 Volts - 24 hours a day non stop. Clean non drinkable water only.
Regulations	Complying with EN60335-2-41:2003/A2:2010 and WEEE/RoHs directives.
Note	Italian PATENTED component installed inside. Read the instruction booklet for correct set up and use.

AVAILABLE FIXING PLATES



SP is available in 2 and 3 outlets

TYPE	Volt	Hz	Amp	Watt (in)	RPM	A	B	C	Ø OUT	Propeller Ø [mm]	Weight [Kg]
SP-7.2	115	50-60	0,76-0,70	80-69	2850-3440	105	200	90	9,5	50x15° 2 Blades	1,8
SP-7.3	110-115	50-60	0,79-0,65	67-69	2900-3440	105	200	90	9,5	50x15° 2 Blades	1,8
SP-9.2	115	60	0,82	89	3500	105	200	90	9,5	45x15° 2 Blades	1,5