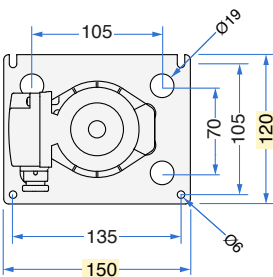
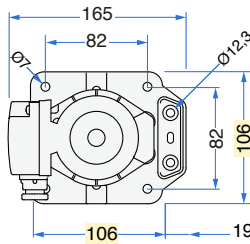
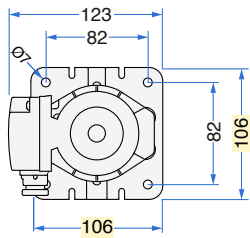
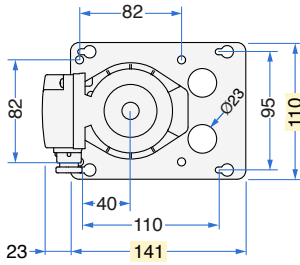




AVAILABLE FIXING PLATES

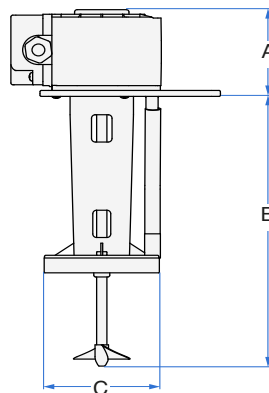
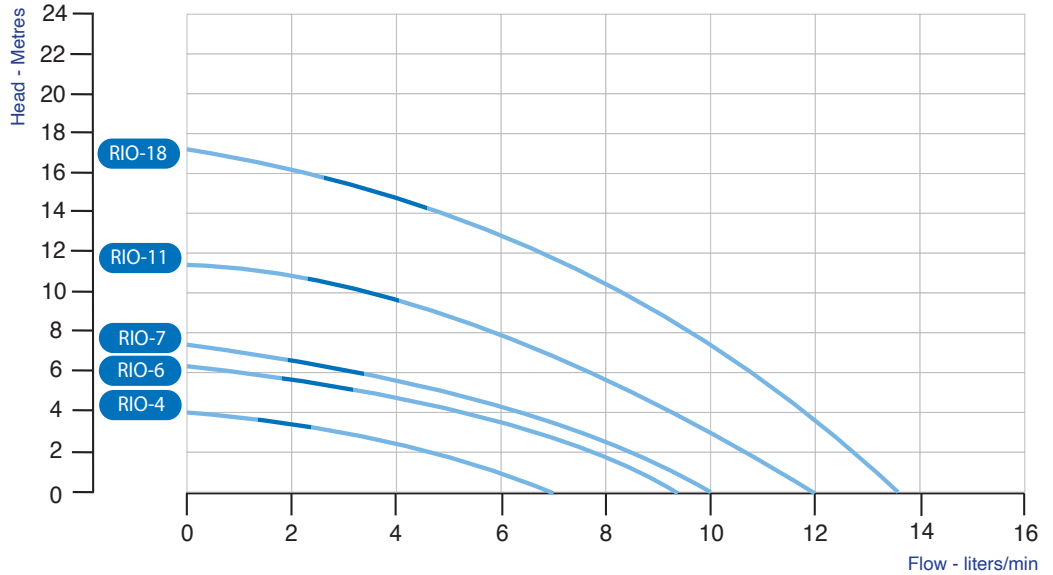


RIO series is a **very compact solution** suitable for **poorly ventilated installations**. Its **encapsulated design** grants **protection** from dust and dampness even in the most particular applications.

TECHNICAL SPECIFICATIONS



- Category** AGITATOR-PUMP with immersed vertical axis.
- Windings** Single-phase motor. Insulation Class F.
- Motor body** Overinjected PA66-30% glass fiber plastic shell.
- Protection** IP 54 ingress protection rating.
- Safety** Built-in thermal motor protection system.
- Ball bearings** Ø 8 mm NSK, SKF or equivalent, in semi-rigid noise-damping silicone casing.
- Motor shaft** AISI 303 INOX steel Ø 8 mm.
- Fastening parts** INOX steel or corrosion-resistant materials.
- Motor parts** Thermoplastic motor parts resistant to high temperature.
- Cooling system** Water cooled pump.
- Water connection** Pipe connection Ø 9,5/12,3 mm compatible with John Guest fittings.
- Operation** Power supply 220-240 Volts - 24 hours a day non stop. Clean non drinkable water only.
- Regulations** Complying with EN60335-2-41:2003/A2:2010 and WEEE/RoHs directives.
- Note** **PATENTED device**. Read the instruction booklet for correct set up and use.



TYPE	Volt	Hz	Amp	Watt (in)	RPM	A	B	C	Ø OUT	Propeller Ø [mm]	Weight [Kg]
RIO-4	220-240	50	0,15	35	2800	73	145	64	9,5	50x15° 2 Blades	1,4
RIO-6	220-240	50	0,18	45	2800	73	185	78	9,5	50x15° 2 Blades	1,4
RIO-7	220-240	50	0,20	48	2800	73	220	90	9,5	50x15° 2 Blades	1,5
RIO-11	220-240	50	0,35	77	2800	85	210	90	9,5	50x15° 2 Blades	1,9
RIO-18	220-240	50	0,52	104	2800	100	200	90	9,5	50x15° 2 Blades	2,4