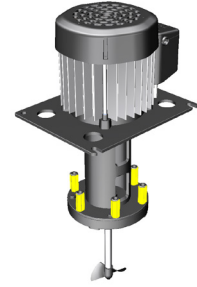


ESP series is an agitator pump solution dedicated to **multiple-tower installations**. It adds, to the long life reliability of the ST series, the possibility to **connect simultaneously up to six cooling circuits** using just one pump.



ESP
MULTI-FLOW

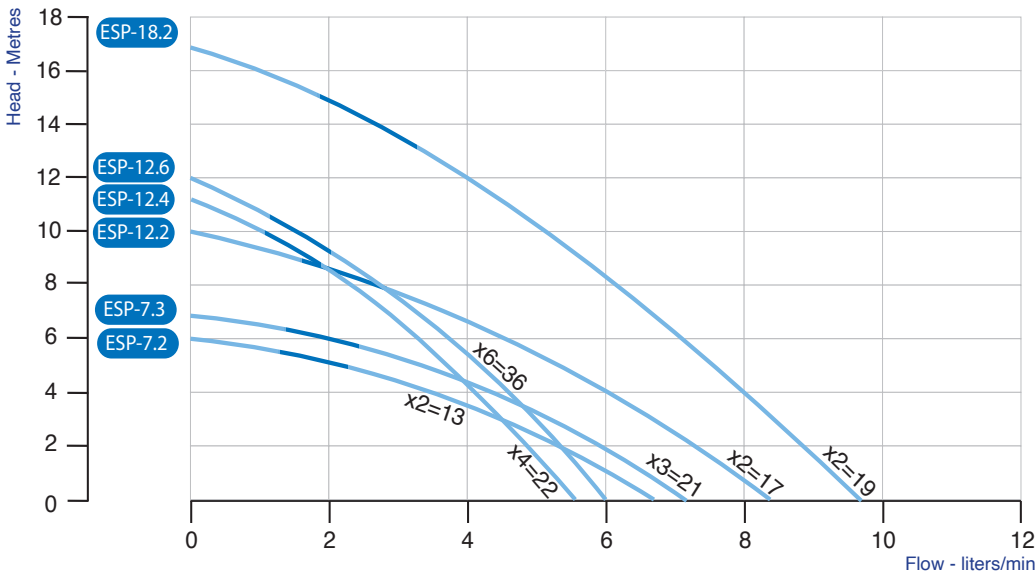
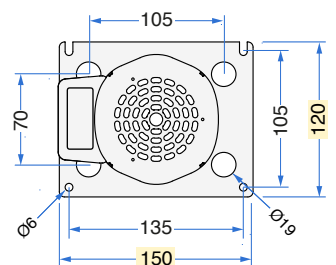
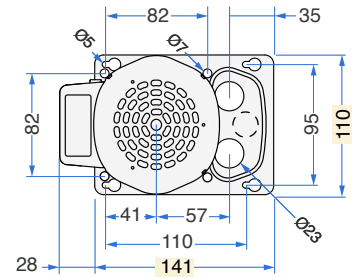


TECHNICAL SPECIFICATIONS

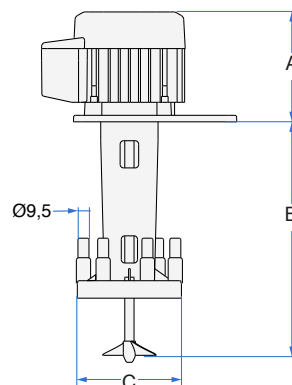


Category	AGITATOR-PUMP with immersed vertical axis.
Windings	Single-phase motor. Insulation Class F.
Motor body	Extruded aluminium casing.
Protection	IP 44 ingress protection rating.
Safety	Built-in thermal motor protection system.
Ball bearings	Ø 8 mm NSK, SKF or equivalent, in semi-rigid noise-damping silicone casing.
Motor shaft	AISI 303 INOX steel Ø 8 mm.
Fastening parts	INOX steel or corrosion-resistant materials.
Motor parts	Thermoplastic motor parts resistant to high temperature.
Cooling system	Air cooled pump with a suction speed of 2,2 m/s.
Water connection	DOUBLE (ESP-7.2) or TRIPLE (ESP-7.3) connection Ø 9,5/12,3mm John Guest fittings.
Operation	Power supply 220-240 Volts - 24 hours a day non stop. Clean non drinkable water only.
Regulations	Complying with EN60335-2-41:2003/A2:2010 and WEEE/RoHs directives.
Note	Italian PATENTED component installed inside. Read the instruction booklet for correct set up and use.

AVAILABLE FIXING PLATES



ESP is available in 2, 3, 4 and 6 outlets



TYPE	Volt	Hz	Amp	Watt (in)	RPM	A	B	C	Ø OUT	Propeller Ø [mm]	Weight [Kg]	
ESP-7.2	220-240	50	0,28	60	2890	105	200	90	9,5/12,3	50x15°	2 Blades	1,8
ESP-7.3	220-240	50	0,28	61	2890	105	200	90	9,5/12,3	50x15°	2 Blades	1,8
ESP-12.2	220-240	50	0,41	96	2730	105	200	90	9,5/12,3	50x15°	2 Blades	1,9
ESP-12.4	220-240	50	0,43	95	2700	105	200	90	9,5/12,3	50x15°	2 Blades	1,9
ESP-12.6	220-240	50	0,50	115	2800	119	190	90	9,5	50x15°	2 Blades	2,5
ESP-18.2	220-240	50	0,52	113	2850	119	221	90	9,5/12,3	50x15°	2 Blades	2,6

Rev. 21-02 Performance and electrical data have been tested at 20°C with clean water only. The company reserves the right to modify specifications without prior notice.

© SABER SRL 2024 - ALL RIGHTS RESERVED - REGISTERED DESIGN - www.saberpumps.com