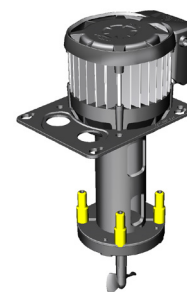


DSP Multi Flow series extends the advantages of the DSP reversed ventilation design to **multiple-tower installations** where you need to fit only one pump in a **compact space**. Made with **UL compliant materials**, supports you reaching **worldwide markets**.



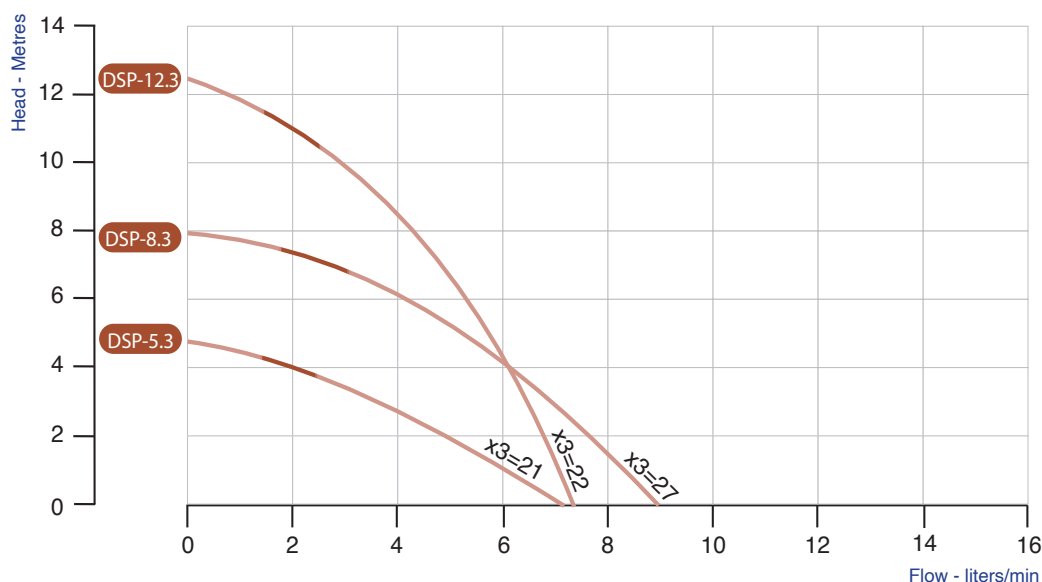
DSP
MULTI-FLOW



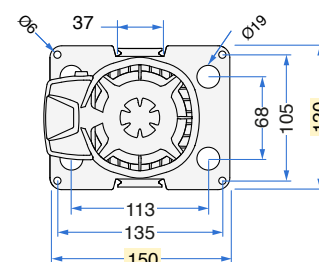
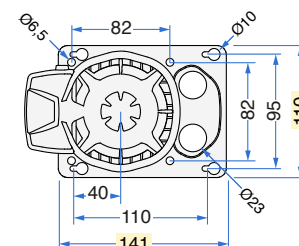
TECHNICAL SPECIFICATIONS



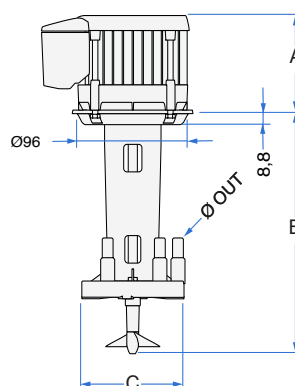
Category	AGITATOR-PUMP with immersed vertical axis.
Windings	Single-phase motor. Insulation Class F.
Motor body	Extruded aluminium casing.
Protection	IP 44 ingress protection rating.
Safety	Built-in thermal motor protection system.
Ball bearings	Ø 8 mm NSK, SKF or equivalent, in semi-rigid noise-damping silicone casing.
Motor shaft	AISI 303 INOX steel Ø 8mm.
Fastening parts	INOX steel or corrosion-resistant materials.
Motor parts	Thermoplastic motor parts resistant to high temperature complying to UL regulation.
Cooling system	Air cooled pump with a suction speed of 2,2 m/s.
Water connection	TRIPLE connection Ø 9,5 mm John Guest fittings.
Operation	Power supply 110 & 115 Volts - 24 hours a day non stop. Clean non drinkable water only.
Regulations	Complying with EN60335-2-41:2003/A2:2010 and WEEE/RoHs directives.
Note	PATENTED device. Read the instruction booklet for correct set up and use.



AVAILABLE FIXING PLATES



DSP is available in 3 outlets



TYPE	Volt	Hz	Amp	Watt (in)	RPM	A	B	C	Ø OUT	Propeller Ø [mm]	Weight [Kg]
DSP-5.3	110-115	60	0,48	55	3300	82	153	90	9,5/12,3	50x15° 2 Blades	1,5
DSP-8.3	110-115	60	0,67	70	3400	95	195	90	9,5/12,3	50x15° 2 Blades	1,8
DSP-12.3	110-115	60	1,34	115	3500	110	195	90	9,5/12,3	50x15° 2 Blades	1,8