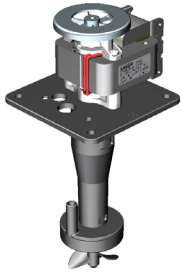
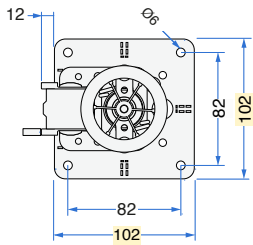


CLT

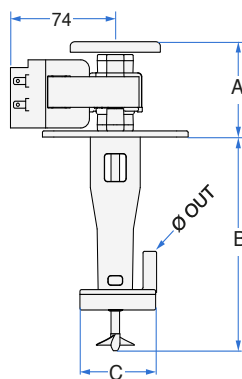
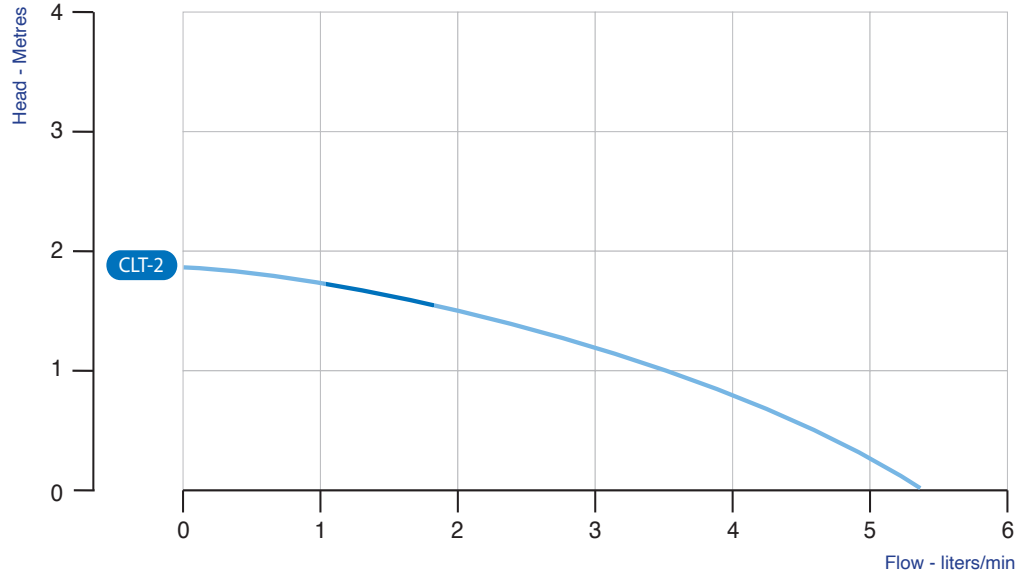


AVAILABLE FIXING PLATES



TECHNICAL SPECIFICATIONS

Category	AGITATOR-PUMP with immersed vertical axis.
Windings	Single-phase motor. Insulation Class F.
Motor body	Naked.
Protection	IP 00 ingress protection rating.
Safety	Built-in thermal motor protection system.
Ball bearings	Ø 6 mm bearings in a semi-rigid noise-damping silicone casing.
Motor shaft	AISI 303 INOX steel Ø 6 mm.
Fastening parts	INOX steel or corrosion-resistant materials.
Motor parts	N.A.
Cooling system	Air cooled pump with a suction speed of 1,2 m/s.
Water connection	Compatible with John Guest fittings.
Operation	Power supply 115 or 220-240 Volts - 24 hours a day non stop. Clean non drinkable water only.
Regulations	Check machine's requirements.
Note	Read the instruction booklet for correct set up and use.



TYPE	Volt	Hz	Amp	Watt (IN)	RPM	A	B	C	Ø OUT	Propeller Ø [mm]	Weight [Kg]
CLT-2	220-240	50	0,20	26	2500	64	150	52	9,5	40x15° 2 Blades	1
CLT-2	220-240	50	0,21	27	2500	64	150	52	9,5	45x15° 2 Blades	1