

The **AST** series uses **three-phase motors** and have been specifically designed for machine tools, ceramic and glass process machinery, and for all those cases in which liquids or coolants must be moved.

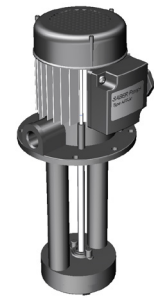


AST

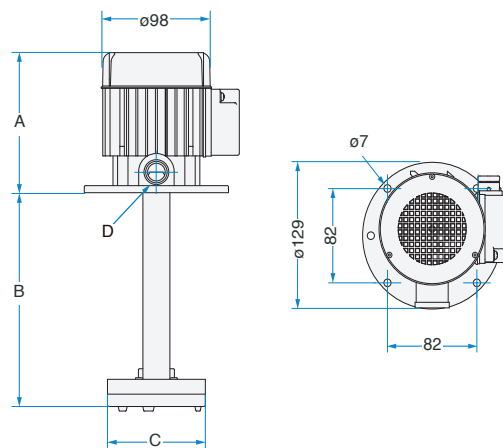
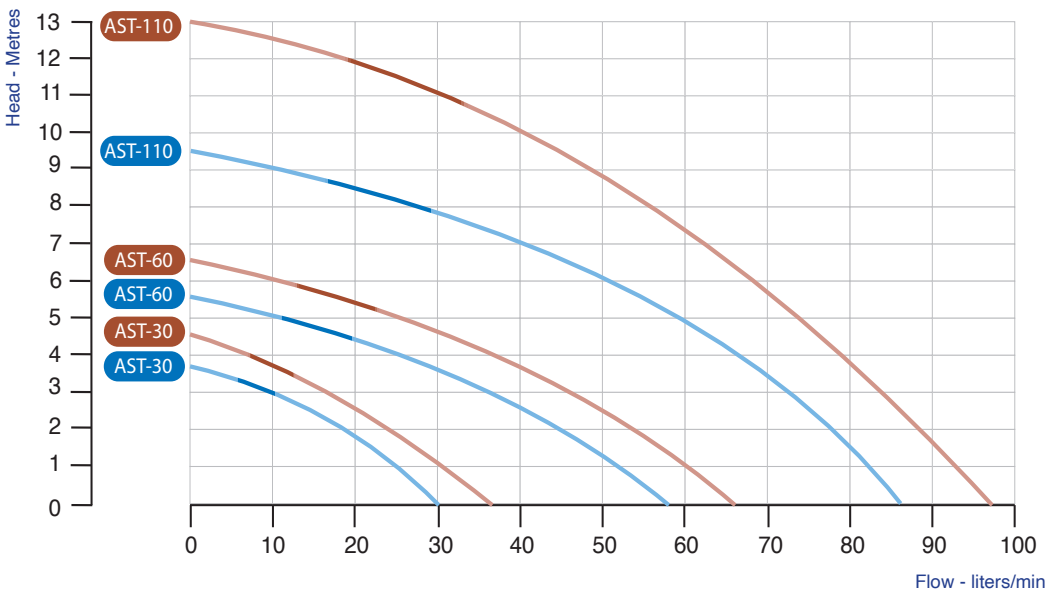
THREE PHASE VERSION

TECHNICAL SPECIFICATIONS

Category	CENTRIFUGAL-PUMP with immersed vertical axis.
Windings	Single-phase motor with Class F winding.
Motor body	Extruded aluminium casing.
Protection	IP 54 ingress protection rating.
Safety	Built-in thermal motor protection system.
Ball bearings	NSK and SKF (long-life) self-lubricant bearings or equivalent, in semi-rigid noise-damping housings.
Motor shaft	AISI 303 stainless steel shaft.
Connections	Motor power cord 1.100 mm long without plug.
Immersion	Motor-driven pump with immersed vertical axis without clamping devices.
Optional	Upon request the pumps can be assembled with fastening parts in stainless steel or anti-oxidant materials (see picture no. 2).
Power supply	Voltages and frequencies according to customer's specific requirements can be supplied.
Note	PATENTED device. Read the instruction booklet for correct set up and use.



WITH STAINLESS STEEL
(OPTIONAL)



ACCESSORIES:
Pipe Fitting 3/8" & 1/2"



TYPE	Volt	Hz	Amp	KWatt (IN)	Hp	RPM	A	B	C	D Ø OUT	Weight [Kg]
AST-30	230/400	50-60	0,30-0,30	0,09	0,12	2800-3200	125	85/120/150/180/200/250	87	3/8"	1,8
AST-60	230/400	50-60	0,33-0,28	0,12	0,16	2800-3200	125	85/120/150/180/200/250	87	1/2"	1,8
AST-110	230/400	50-60	0,45-0,58	0,15	0,20	2800-3300	141	170/200	87	1/2"	2,3